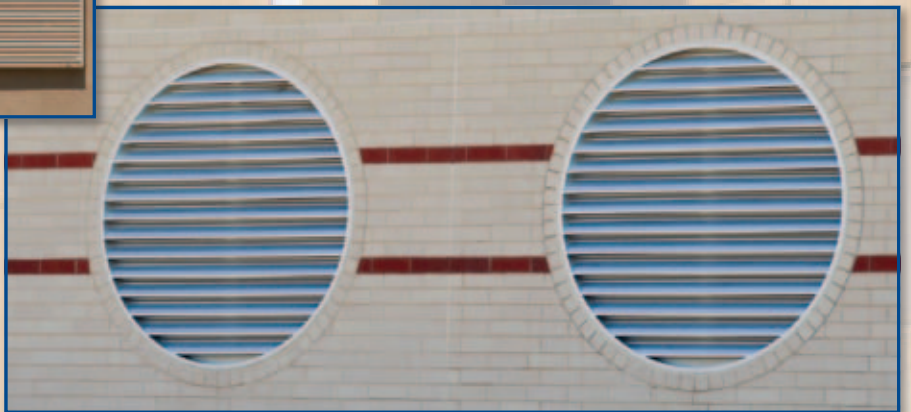


RELIABLE[®]

ARCHITECTURAL LOUVERS



www.reliablelouvers.com

Reliable Products



Reliable employees strive to provide the very best in quality and service.

Reliable Products manufactures quality architectural and mechanical louvers for the construction and hospitality industry. The industry leader in thru-the-wall PTAC louvers, Reliable also offers a full line of wall louvers for intake and exhaust applications. Whether your job is new construction or renovation, large or small, Reliable can provide the right louvers on any future project. Let our experienced sales and engineering staff assist you on any standard or special applications you may have.

Reliable's commitment to product development has produced a wide variety of louver models for almost every application. Many years of joint R&D efforts with all major PTAC manufacturers has produced the AEL Series Louvers, which are manufacturer-approved for use on their equipment. These louvers are designed to

the exact performance and installation requirements of each PTAC unit, and are available for standard or special size units. Reliable utilizes the latest in louver design technology and manufacturing processes to increase the performance and value of our products. Special drainable frame and blade systems are utilized on many models to provide even more protection from water penetration than standard louvers. Models are available with all-welded construction, making them stronger and more durable than most mechanically fastened louvers. Horizontal and vertical blade Weather Resistant Louvers featuring AMCA licensed wind driven rain performance are offered for the most demanding applications. And in-house Kynar® paint and anodize finish lines ensure high quality finished products that are delivered quickly.

Reliable offers the highest quality louver products available for a variety of applications. Whether your need is for PTAC or other specialty thinlines, intake/exhaust wall louvers or louvers to prevent the entrance of wind driven rain, Reliable Products has a product for your application. When it comes to louvers, choose Reliable Products!

APPLICATIONS

- **Thin Line Louvers**

The AEL Series louvers are used in numerous applications with the most frequent being hotel/motel new construction and renovations. Other uses are retirement and nursing homes, extended care facilities, college dorms, hospitals and offices. They are also used for sunscreens, penthouses and equipment screens.



- **Stationary, Sightproof and Drainable Louvers**

Used for air intake or exhaust in wall-mounted applications. Non-drainable models provide attractive continuous blade appearance and are available in special round and triangular shape configurations. Sightproof models offer complete sight restriction and prevents tampering through the louvers. Drainable models combine high air performance and high rain penetration protection.

- **Weather Resistant Louvers/Florida Approved & Dade County Certified Louvers**

The ultimate in weather protection for wall applications. Where standard louvers are designed to minimize water penetration under “still air” conditions, Weather Resistant louvers are designed specifically to prevent the intrusion of wind driven rain. Each model is tested under simultaneous severe rain, wind and system airflow conditions. Utilizing these models ensures the highest level of protection available against water penetration in any situation. They also provide solutions for high airflow/small opening conditions common to many retrofit and air handler applications. Florida approved and Dade County certified louvers available for most stringent of weather conditions.

- **Adjustable and Combination Louvers**

Wall louvers that provide the air shut-off capability often required in warehouse and emergency generator applications. Adjustable Louver blades operate from open to close, preventing airflow when unneeded or under inclement weather situations. Combination Louvers combine front stationary louver blades with rear operating blades to create a consistent exterior appearance regardless of the operable blade position. Both Adjustable and Combination Louvers are available with a variety manual, electric and pneumatic actuators.

- **Sunshades**

If your project requires reducing the effects of sunlight or simply adding a special decorative appeal, then Reliable’s broad range of sunshade products give you the comfort of knowing you’re getting an aesthetically appealing product. Reliable sunshade products offer many blade, fascia, outrigger and attachment methods. With the unlimited finishing color capabilities, Reliable Sunshades will set your façade apart.

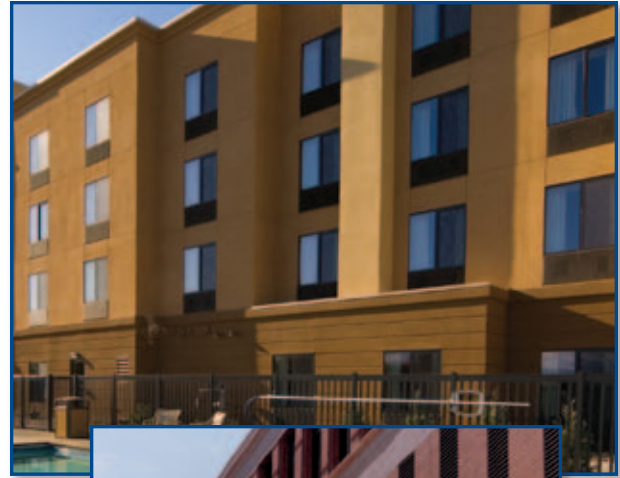
Reliable Products

MATERIALS

Reliable is careful to use only quality materials during fabrication of our louver products to insure customer satisfaction. Specification sheets are available upon request that outline various material shapes, designs, dimensions and material thickness.

FINISHES

Reliable features in-house Kynar paint and anodize finish capabilities. Painted finishes include 50% Kynar Baked Enamel, 2-coat Kynar 500 in solid and mica colors, and 3-coat Kynar 500 in exotic and metallic colors. Painted finishes requiring special colors are computer matched in-house from customer provided samples. A limited 20-year warranty is available on most painted finishes. Anodize finishes offered include Class 1 & 2 Clear and Color anodize. Color anodize is available in Light, Medium & Dark Bronze and Black. All finishes are completed in our manufacturing/paint facilities ensuring quick delivery of our product.



COMMITMENT TO OUR CUSTOMERS

Reliable continually strives for success. We demonstrate commitment to our customers by participating in various memberships, certifications and affiliations.



RELIABLE PRODUCTS' COMMITMENT TO IMPROVING THE ENVIRONMENT CONTRIBUTES TO LEED CERTIFICATION.

Reliable sunshades preserve energy including reducing solar heat gain in summer months, while redirecting sunlight to use more effectively in the colder months. They control glare and increase lighting, while still creating a connection to the outdoors. Depending on job location, Reliable Products can be transported within a 500-mile radius.

These variables assist in LEED credits.

ISO9001 CERTIFIED RELIABLE PRODUCTS IS AN ISO 9001:2008 REGISTERED COMPANY.

The requirements for creation and maintenance of a quality management system are defined by this standard. Conformance with ISO 9001:2008 enables Reliable to manage, track and improve performance in a way that is compatible with our company's quality objectives. Reliable's quality management system includes consideration for potential sources of customer dissatisfaction and efforts toward continual improvement.

MANY RELIABLE MODELS ARE AMCA LICENSED, with air performance and water penetration data ratings based on tests and procedures conducted in accordance with AMCA Publication 511. All Reliable models are tested with mill finish. Reliable certifies the 445RB, 245D, 6375DC, 6350DS, 4375FD, 445FB, 6375FD, 745WR, 4375B, 4375D, 4375Z, 6RRSV, 5DDWR/5DDWRG, 445RDHBD, 6375D, 6375RDABL, 6375Z, 1245RAAZ, 445RAAZ, 845RAAZ, 645DD, 6425DD, 6375RBABL, 445RB5, and 445RD are licensed to bear the AMCA Certified Ratings Seal. Ratings do not include the effects of bird screen.

Selector Guide

MODEL	DEPTH	BLADE TYPE – SPACING	FREE AREA
Stationary Fixed Blade Louvers			
15030Z	1.5	Horizontal – 1.5"	51%
15045RZ	1.5	Horizontal – 1.5"	50%
15045Z	1.5	Horizontal – 1.5"	43%
245RB	2	Horizontal – 3.188"	42%
245D	2	Horizontal – 2.444"	38%
430RB*	4	Horizontal – 4"	61%
430RD*	4	Horizontal – 4"	56%
4375DC	4	Horizontal – 4"	54%
4375DFL	4	Horizontal – 4"	54%
4375Z*	4	Horizontal – 5.094"	54%
4375B	4	Horizontal – 4.750"	56%
4375D*	4	Horizontal – 5.094"	54%
445RB5*	4	Horizontal – 5.094"	53%
445RB*	4	Horizontal – 4"	53%
445RD5*	4	Horizontal – 5.094"	53%
445RD*	4	Horizontal – 4"	53%
445RGZ5	4	Horizontal – 5"	44%
445RZD5	4	Horizontal – 5"	45%
445RDS	4	Horizontal – 4"	53%
445RD5S	4	Horizontal – 5.094"	53%
445RBS	4	Horizontal – 4"	53%
445RB5S	4	Horizontal – 5.094"	53%
445DD	4	Horizontal – 5.094"	44%
4RC-H	4	Horizontal – 4"	22%
4RC-V	4	Vertical – 4"	22%
4RY-H	4	Horizontal – 4"	29%
4RY-V	4	Vertical – 4"	29%
6375D*	6	Horizontal – 5.906"	57%
6375DC	6	Horizontal – 6"	57%
6375DFL	6	Horizontal – 6"	57%
6375DS	6	Horizontal – 5.906"	57%
6375Z*	6	Horizontal – 5.906"	55%
6375ZS	6	Horizontal – 5.906"	55%
6425DD	6	Horizontal – 5"	51%
645RB	6	Horizontal – 6"	48%
645DD*	6	Horizontal – 6"	44%
645RB	6	Horizontal – 6"	48%
645DD*	6	Horizontal – 6"	44%
Extruded High Performance Louvers			
5DDWRG	5	Horizontal – 2"	47%
6RRSV	6	Vertical – 1.5"	42%
745WR	7	Horizontal – 2.750"	49%

Z = J Style Blade D = Drainable Blade S = .081 Blades and .125 Frame DC = Dade County
 B = Baffle Blade DD = Double Drainable Blade G = .062 Blades and .081 Frame FL = Florida Approved
 C = Chevron Blade WR = Wind Driven Blade * = .125 Material Available

MODEL	BLADE SPACING	BLADE ANGLE
PTAC Louvers		
AEL-42	.775"	42° Standard
AEL-30	.775"	30° Standard
AEL-45	.775"	45° Standard
"HURRICANE" PTAC Louver		
AEL-42D-7060	.775"	42° Standard
AEL-42-7020W	.775"	42° Standard

Channel Frames, Flange Frames and Glazing Frames Available
 Approved for thru-the-wall application by all PTAC manufacturers.

MODEL	
Wallbox Louvers	
AEL-92-266	HDAL-45-H-CF
AEL-92-266-L	HDAL-45-H-CF-L
AEL-268-266	HDAL-45-H-FF
AEL-268-266-L	HDAL-45-H-FF-L
AEL-92-267	HDAL-45-V-CF
AEL-92-267-L	HDAL-45-V-CF-L
AEL-268-267	HDAL-45-V-FF
AEL-268-267-L	HDAL-45-V-FF-L
AEL-268-266-D	
AEL-268-266-D-L	

92 = Horizontal Blade D = Double Stacked
 268 = Vertical Blade H = Horizontal Blade
 266 = Channel Frame V = Vertical Blade
 267 = Flange Frame CF = Channel Frame
 L = Lattice FF = Flange Frame

Available Products*:

- Air Discharge Louvers
- Adjustable Louvers
- Louver/Damper Combinations
- Acoustical Louvers
- Decorative Screens
- Dampers
- Various Bird and Insect Screens

*Available in Standard and Custom Colors

All louvers available in the following finishes:

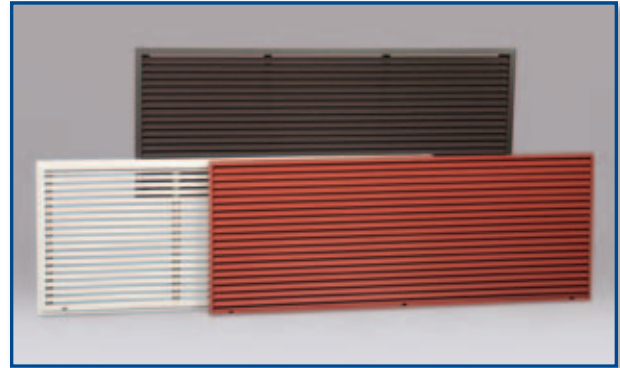
- Mill
- Baked Enamel (50% Kynar)
- Kynar (70%)
- Kynar 3-Coat (70%)
- Clear Anodized
- Color Anodized
(light, medium, and dark, bronze, black)

Thin Line Louvers

For PTAC Application

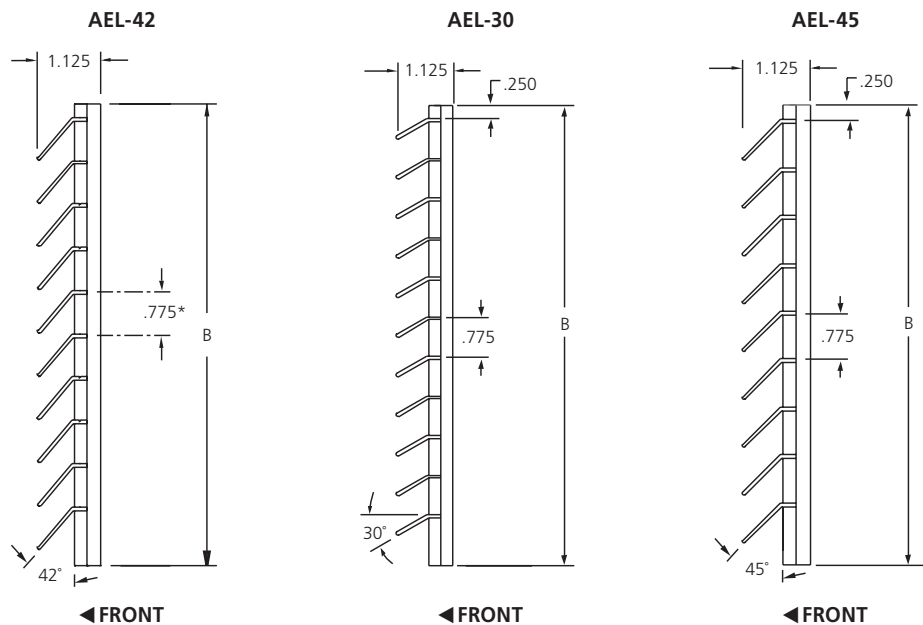
The **AEL-42** architectural extruded aluminum louver meets the required free area, bar arrangements, 42 degree blade angle and unit attachments for the PTAC units. At the same time it provides a thin slim line decorative appeal that enhances the outside appearance of any facility. It is the most frequently used louver with the PTAC through-the-wall units. This louver is available in standard or special sizes with various frame choices and finishes.

The **AEL-30** architectural extruded aluminum louver has 30 degree blade angle and is used with PTAC air conditioning/ heating units that has higher free air requirements. It is available in various sizes and finishes to meet the customer requirements for a more pleasing outside appeal where PTAC units are utilized.



AEL-42, AEL-30, AEL-45

The **AEL-45** architectural slim line louver that is generally used for decorative purposes or as an intake or exhaust application where water penetration is not an issue. Some ptac units require the 45-degree blade as a standard louver.



MODEL	BLADE MATERIAL	BLADE SPACING	BLADE ANGLE
Thin Line Louvers for PTAC Application			
AEL-42	.048/.062 Extruded Aluminum	.775"	42° Standard
AEL-30	.048/.062 Extruded Aluminum	.775"	30° Standard
AEL-45	.048/.062 Extruded Aluminum	.775"	45° Standard

1. The AEL Series louvers are available with a variety of glazing, channel or flange frames.
2. Reliable is the leader in the Architectural PTAC louver industry. Reliable is approved for all thru-the wall louver applications.
3. Options Available: (Non-insulated, Insulated) Blankoff, Insect and Bird screens

THE INDUSTRY'S #1 MANUFACTURER AND SUPPLIER OF PTAC ARCHITECTURAL LOUVERS . . .

Reliable Products has been the #1 manufacturer and supplier of the AEL-42 thin line louver for the packaged terminal air conditioning OEM's for over 40 years. With a Reliable louver, you are assured that the PTAC's performance will not be hindered due to an incorrect intake/exhaust or a/c attachment application. You are also assured that you get a quality product with a 20 year guaranteed finish. Call us today for your custom quote and let our experienced staff go to work for you in determining the best application. Size options, various frames, specific a/c brand compatibility, blank off and finish choices allow you to best suit your property with the most trusted product.

BEFORE Standard PTAC stamped application



AFTER The **AEL-42** thin line louver dramatically enhances the appearance of your property.



***Any Size, Any Color,
Any PTAC Brand!***

Hurricane Impact Thin Line Louvers

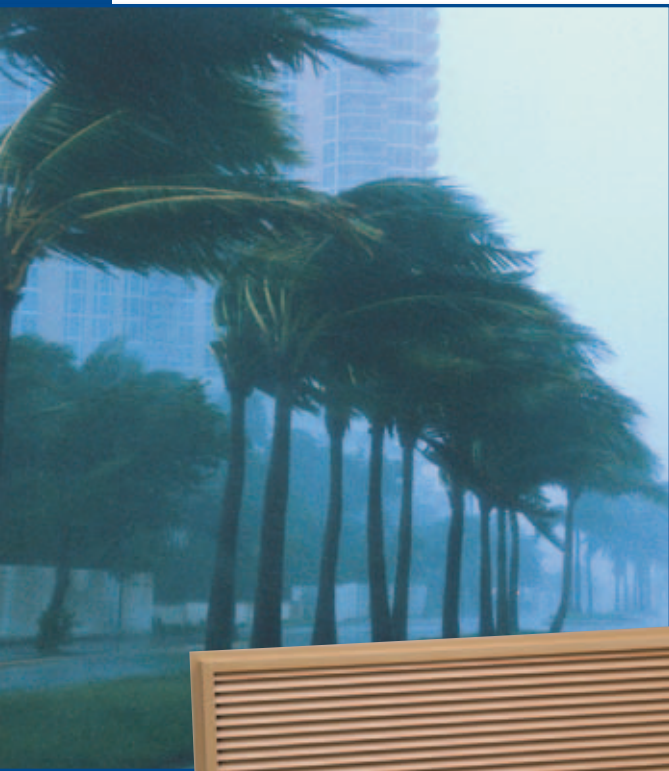
Reliable provides the industry's only approved louver for packaged terminal air conditioners with the hurricane impact approval. Various frame applications available with approval on sizes up to 144" w x 36" h. Dade and Florida Certification pending.

The **AEL-42D-7060** is the best weather louver for PTAC applications. It is the only exterior PTAC louver that has earned Florida Date county Certification — the most rigorous testing standards for hurricane protection.

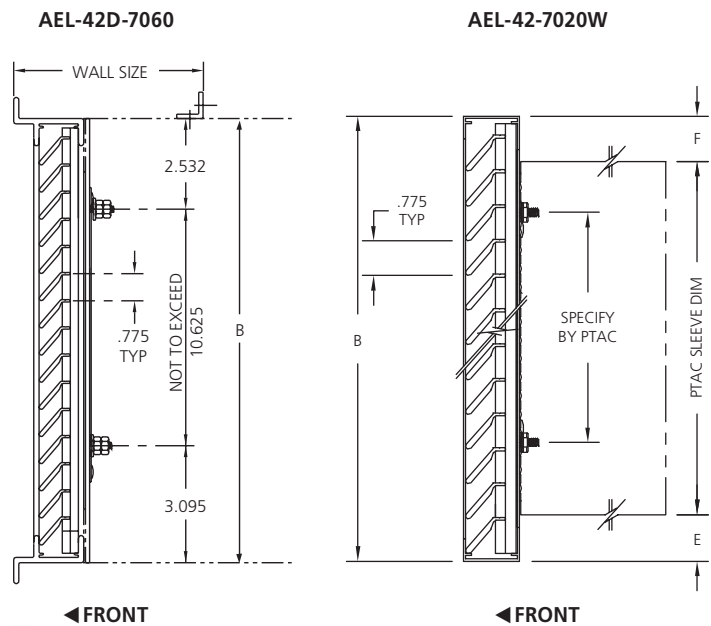
The AEL Series louvers have various fabrication methods and numerous frame choices that allow their use as an integral part of a window system or separately as a stand alone approved louver.

Don't settle for less; ask for and receive the very best from the number one manufacturer of "slim-line" louvers. Specify Reliable's AEL Series to insure correct performance from your horizontal or vertical PTAC air conditioning/heating units.

If your application calls for standard size ptac hurricane louvers (NOA# 5-0412.01 AEL-42D-7060) or oversized hurricane louvers (AEL-42-7020W), you can be assured that the louver not only provides correct application for the specific brand of a/c, but also protects from flying debris in case of inclement weather.



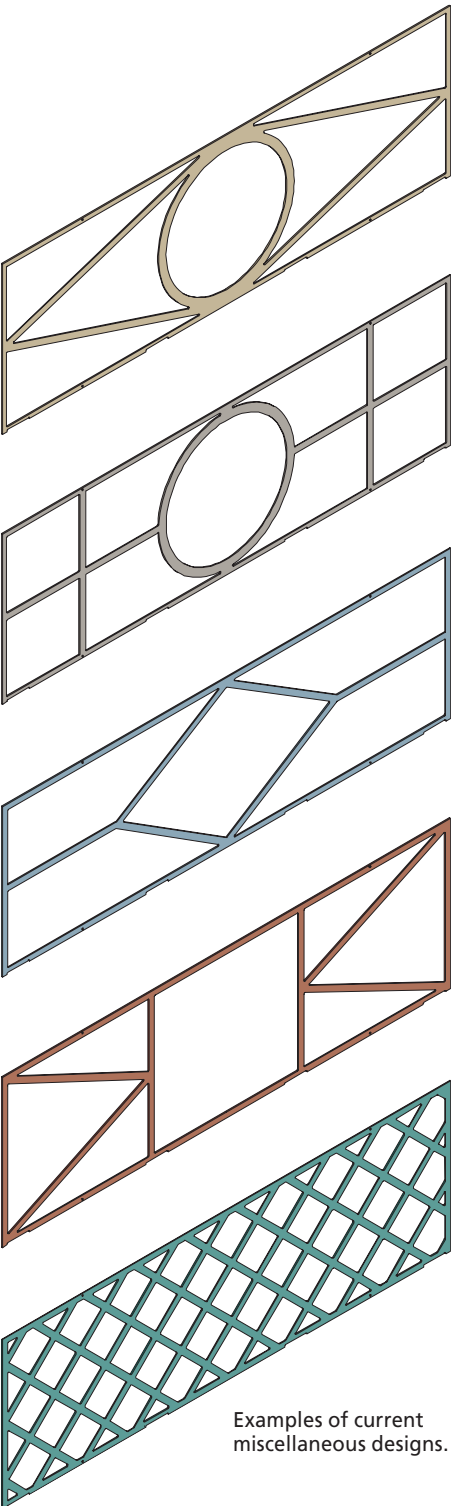
AEL-42D-7060



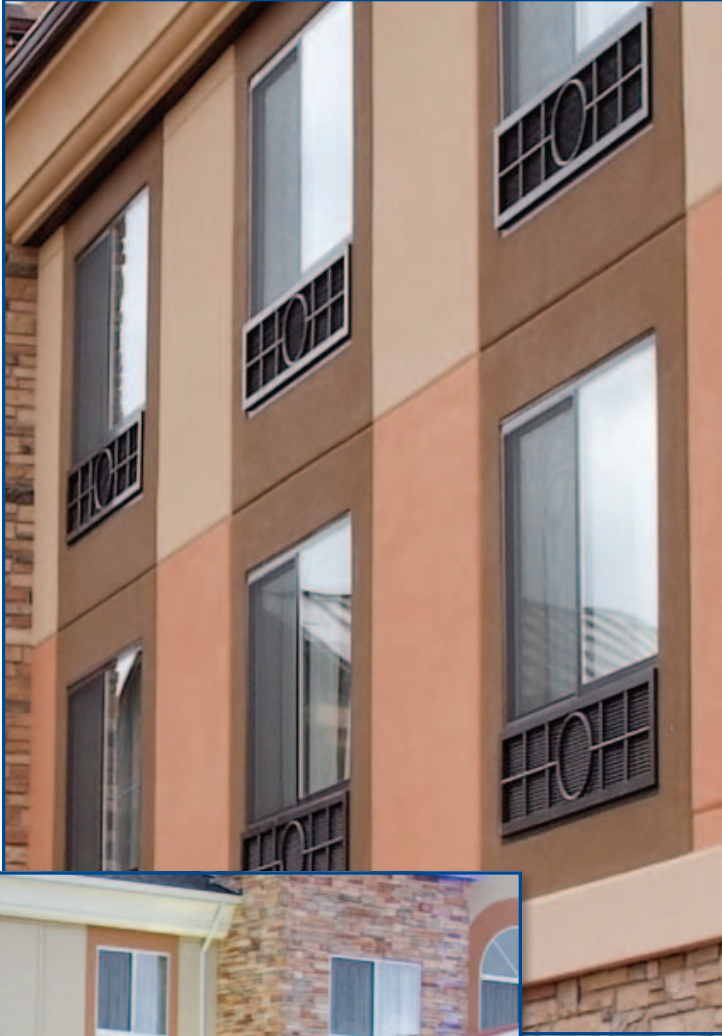
MODEL	BLADE MATERIAL	BLADE SPACING	BLADE ANGLE
Hurricane Impact Louvers			
AEL-42D-7060	.125 Extruded Aluminum	.775"	42° Standard
AEL-42-7020W	.125 Extruded Aluminum	.775"	42° Standard

Enhance your hotel properties standard packaged terminal air conditioning louvers with a décor medallion. Contrasting or tone on tone paint colors will truly set your property apart. These medallions can add extra decorative appeal to any louver application.

For an exclusive or special design, please forward a sketch or idea for an accurate quote.



Examples of current miscellaneous designs.



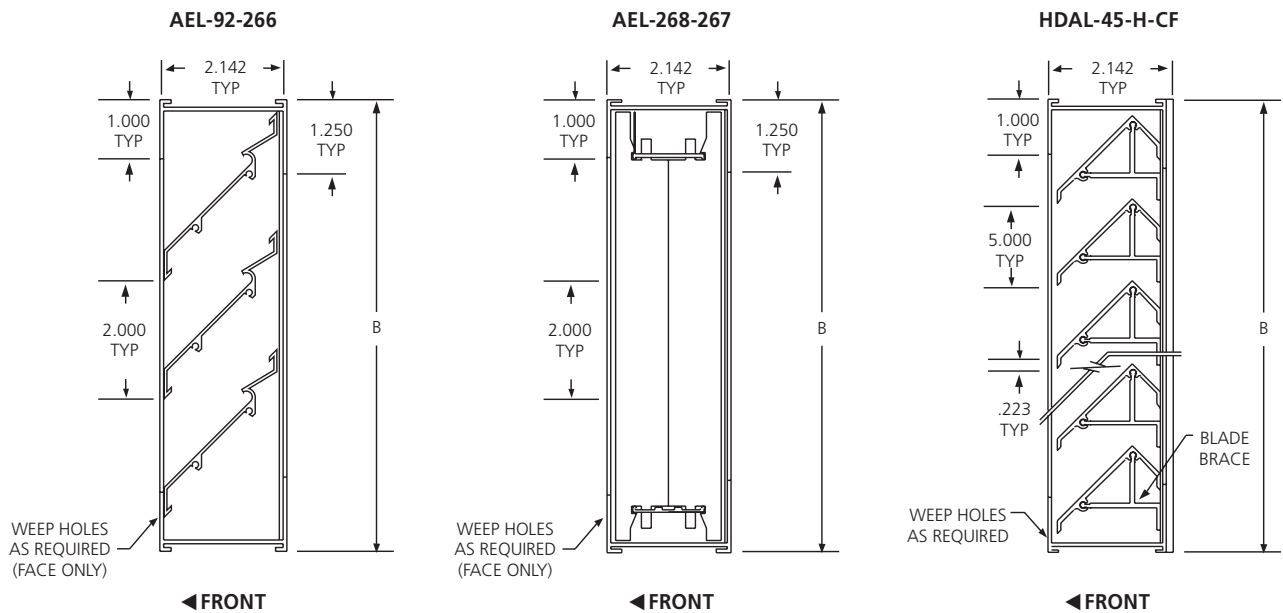
Wallbox Louvers

For Unit Ventilator Application

The wall box louver is available in three models. These include two horizontal and one vertical blade series. The louvers are generally used with unit ventilators and are approved by the major manufacturers in the heating and cooling industry. The louvers are generally used with unit ventilators and are approved by the major manufacturers in the heating and cooling industry. The louvers are available with a number of accessories. These include standard bird screen with options including; protective lattice, sub frames and other models of insect and bird screens. Standard finish is satin anodized with all other finishes optional. The AEL-92, AEL-268 and HDAL are approved for different types of units. Call Reliable or your unit supplier for information on which louver best suits your unit ventilator.



AEL-92-266, AEL-268-267, HDAL-45-H-CF

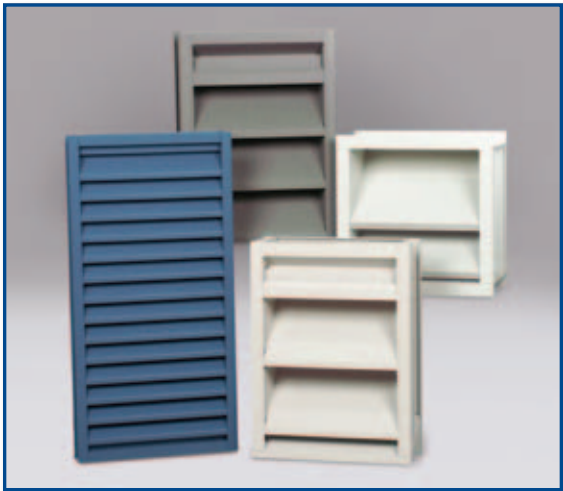


MODEL	BLADE SPACING	BLADE TYPE
Wallbox Louvers For Unit Ventilator Application		
AEL-92-266	2.000"	Horizontal
AEL-268-267	1.000"	Vertical
HDAL-45-H-CF	1.500"	Horizontal

Options Available: Lattice, Subframes, Double stacked, Channel frame, Flange frame.

Stationary Louvers

The stationary blade louvers are equipped with standard “j” style or baffle blades. These louvers generally meet free area requirements and provide an architecturally pleasing appearance, while also providing functional usages. These louvers are available in 1.5", 2", 4" and 6" depth. All Reliable finishes are available and a standard insect or bird screen is included. These louvers are manufactured from all welded construction and are available in special shapes. The 15045RZ provides good free area when water penetration is not a great concern. The 4375B provides excellent free area and a baffle “storm” blade on a 37.5 degree angle, while the 4375Z provides a standard blade on a 37.5 degree blade angle. The Z blade also has excellent free area. The 645RB has 6" depth, while providing a 45 degree blade.



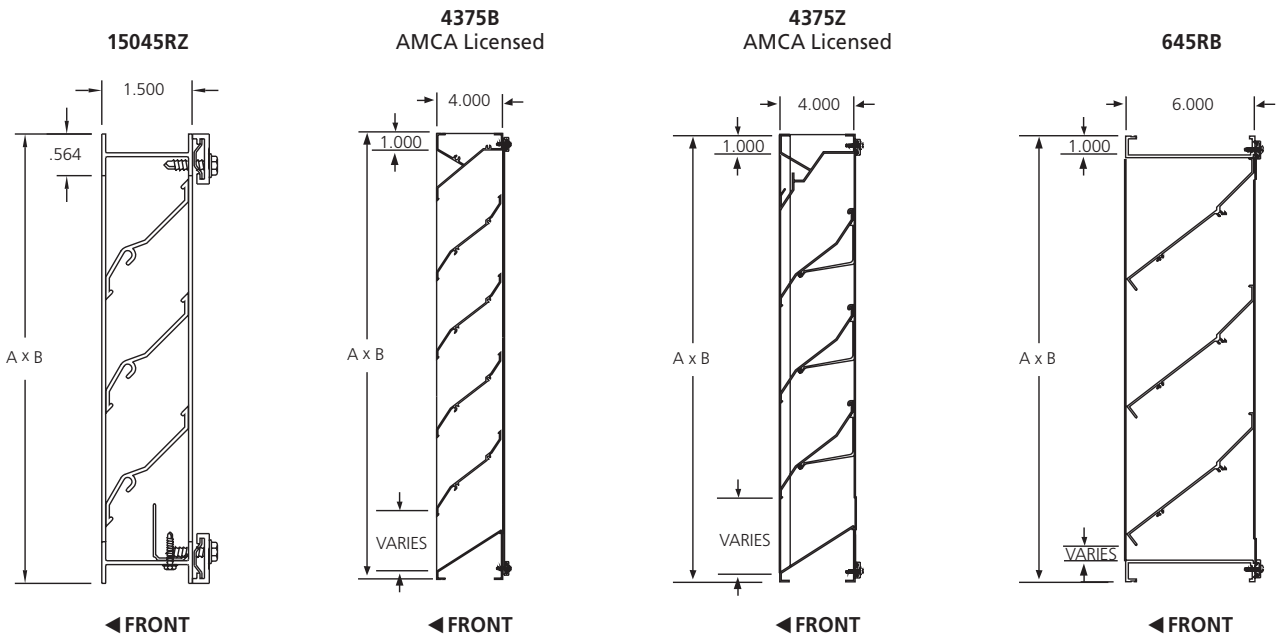
15045RZ, 4375B, 4375Z, 645RB



Reliable Products certifies that the 4375B and 4375Z louvers shown herein are licensed to bear the AMCA Seal. The ratings shown are based on tests and procedures performed in accordance with AMCA Publication 511 and comply with the requirements of the AMCA Certified Ratings Program.

The AMCA Certified Ratings Seal applies to Water Penetration and Air Performance Ratings only.

The 15045RZ and 645RB louvers are not licensed to bear the AMCA seal.



MODEL	FREE AREA	WATER PENETRATION fpm (m/min)	BLADE MATERIAL	BLADE SPACING	PRESSURE DROP INCHES W.G. (kpa)	BLADE ANGLE
Stationary Louvers						
15045RZ	50%	390 (119)	.062 Extruded Aluminum (119)	1.500"	.03 (.01)	45° Standard
4375B	52%	696 (212)	.081 Extruded Aluminum (212)	4.000"	.12 (.03)	37.5° Baffle
4375Z	54%	803 (282)	.081 Extruded Aluminum (245)	5.094"	.15 (.04)	37.5° Standard
645RB	48%	680 (207)	.081 Extruded Aluminum (307)	6.000"	.06 (.02)	45° Blade

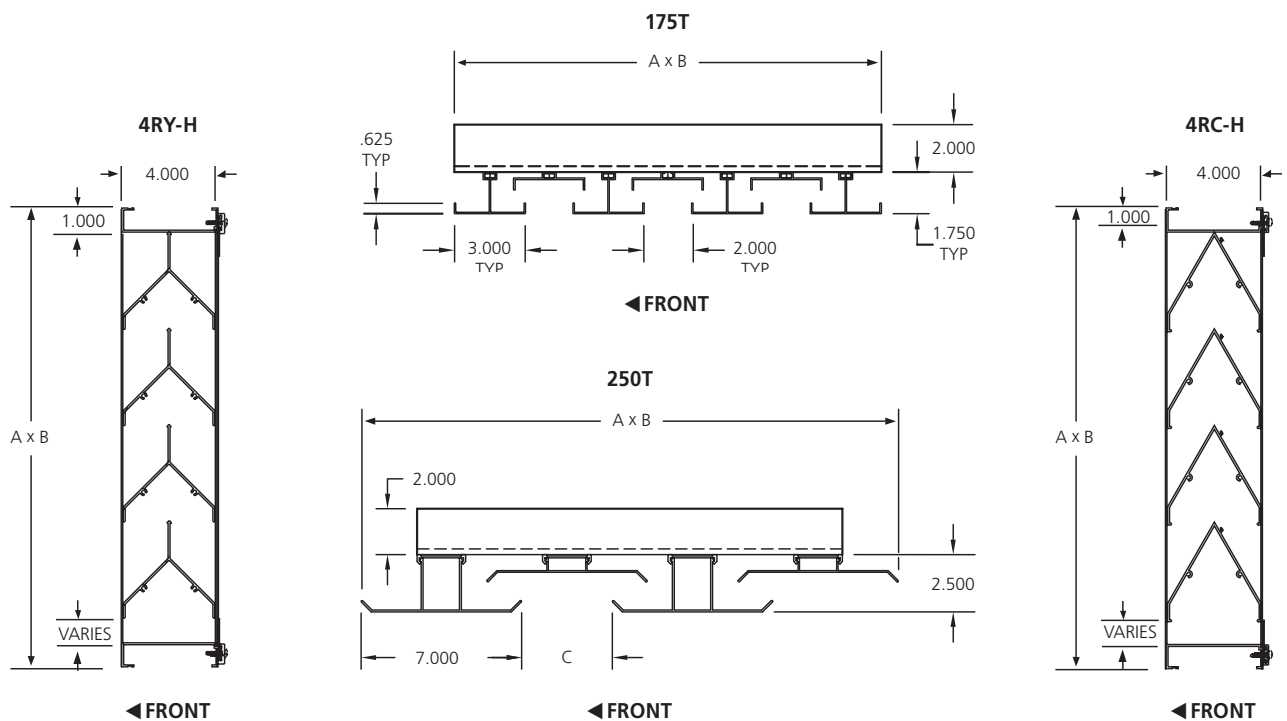
Sight Proof Louvers and Equipment Screens

The 4RY-H "Y", 175T, 250T shape blade, and 4RC-H chevron shape blade models provide airflow with complete sight restriction and restricted access through the blades. Their extruded aluminum construction creates an attractive and sturdy barrier against vandals and general tampering. These models are well suited for applications in public areas where privacy and security are requirements. These models are also useful as vision barriers to conceal objects at ground level such as electrical/mechanical equipment or refuse dumpsters. A standard bird or insect is provided. Available with any painted or anodized finishes.



4RY-H, 4RC-H

175T



MODEL	FREE AREA	WATER PENETRATION (m/min)	BLADE MATERIAL	BLADE SPACING	BLADE TYPE
Sight Proof Louvers					
4RY-H	29%	500 (152)	.081 Extruded Aluminum	4.000"	Sightproof Y-Blade
175T	—	—	.081 Extruded Aluminum	2.000"	Vertical Sightproof
250T	—	—	.081 Extruded Aluminum	5-6.5"	Vertical Sightproof
4RC-H	22%	500 (152)	.081 Extruded Aluminum	4.000"	Sightproof Chevron Blade

Drainable Blade Louvers

Drainable louvers provide a gutter for water disposal. These louvers generally meet free area requirements, while providing extra water protection compared to the standard "j" or baffle blade. All finishes available. Standard insect or bird screen included. These drainable louvers are available in 2", 4" and 6" models. The drainable series louvers are all-welded construction and are available in special shapes. The **245D** provides minimal free area; although provides a gutter drain for rain disposal. The **445RD** has excellent free area, as well as a 45 degree drainable blade. The **4375D** also provides comparable free area with a 37.5 degree blade angle. The **6375D** provides 6" depth with drainable blade and outstanding free area of 57%.



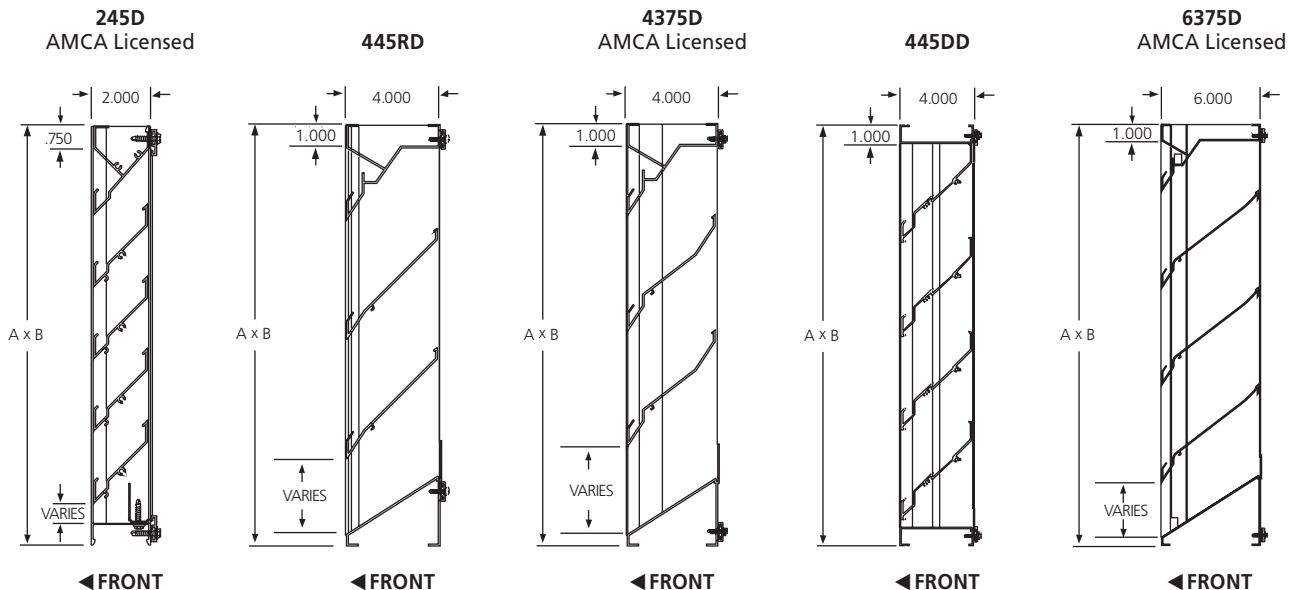
245D, 445RD, 4375D, 445DD, 6375D



Reliable Products certifies that the 245D, 4375D, and 6375D louvers shown herein are licensed to bear the AMCA Seal. The ratings shown are based on tests and procedures performed in accordance with AMCA Publication 511 and comply with the requirements of the AMCA Certified Ratings Program.

The AMCA Certified Ratings Seal applies to Water Penetration and Air Performance Ratings only.

The 445RD and 445DD louvers are not licensed to bear the AMCA Seal.



MODEL	FREE AREA	WATER PENETRATION	BLADE MATERIAL	PRESSURE DROP INCHES W.G. (kpa)	BLADE SPACING	BLADE ANGLE
Drainable Blade						
245D	38%	1197 (365)	.060 Extruded Aluminum	.15 (.04)	2.444"	45° Drainable
445RD	53%	1075 (328)	.081 Extruded Aluminum	.21 (.05)	4.000"	45° Drainable
4375D	54%	1006 (307)	.081 Extruded Aluminum	.15 (.04)	5.094"	37.5° Drainable
445DD	44%	974 (297)	.081 Extruded Aluminum	.19 (.05)	5.094"	45° Double Drainable
6375D	57%	1023 (312)	.081 Extruded Aluminum	.15 (.04)	5.906"	37.5° Drainable

Sunshades

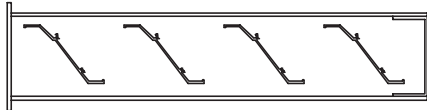
Sunshade Products are a valuable component in a building's design. They can substantially reduce the cooling energy requirements of the interior and provide distinctive architectural characteristics to the exterior. RELIABLE manufactures a wide range of Sun Control Systems for new and existing construction. Designers may select from a variety of System components to optimize the desired shading and visual effect on the structure.



RELIABLE SUNSHADE SYSTEM MODELS

4LBSS, 6LBSS, 8LBSS

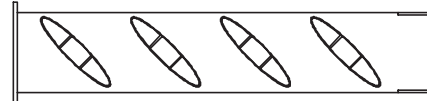
Louver blades designed to provide shade and architectural designs. Capability to create curved front facia to provide unique customized look.



Available in 4" and 6" depths

4AFBSS, 6AFBSS, 8AFBSS

Airfoil blade designs provide distinctive look that can bring depth and a unique design to an otherwise building façade.

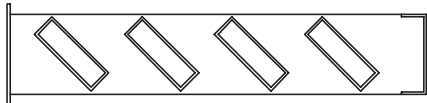


Horizontal and Vertical Installations

Available in 4", 6" and 8" depths

4TBSS, 6TBSS, 8TBSS

Rectangular tube blades available in horizontal, vertical and diagonal directions. Utilized to reduce glare and heat, providing shade and overall dimension to the building façade.

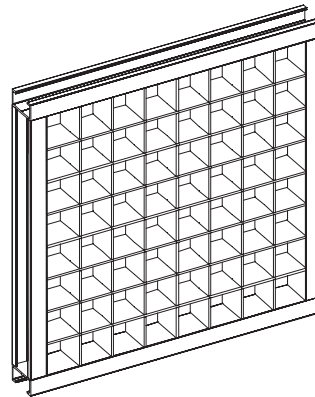


Horizontal and Vertical Installations

Available in 4", 6" and 8" depths

ECS

With various grid and depth dimensions available and various angle options. The ECS can provide unique sun filtering designs.



Horizontal and Vertical Installations

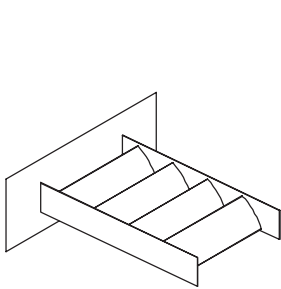
Available in 4", 6" and 8" depths

KYNAR®-BASED PAINTED FINISHES:

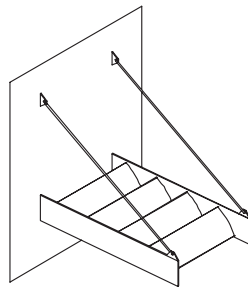
- Standard 2-coat Kynar 500®
- Pearledize 50 and Pearledize 70 (2-coat mica flake)
- 3-coat metallic or exotic Kynar 500®

Anodized finishes available but not suggested because finish will appear different due to difference in material.

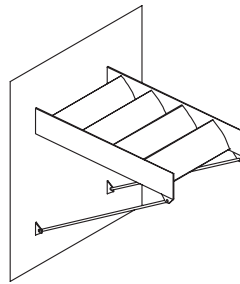
MOUNTING OPTIONS



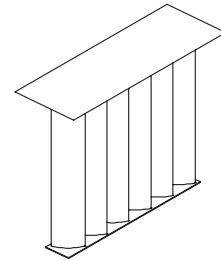
Cantilevered Sunshade



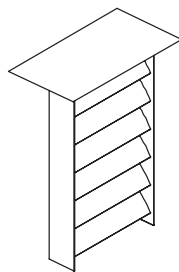
Suspended Sunshade



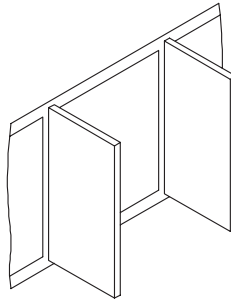
Supported Sunshade



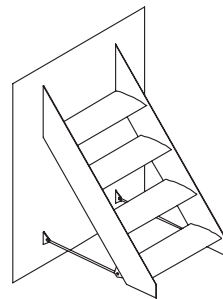
Vertical Sunshade



Horizontal Sunshade



Fin Sunshade

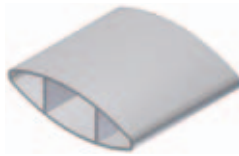


Angle Sunshade

BLADE DESIGNS



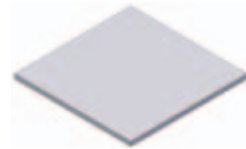
Louver Blade



Airfoil Blade



Rectangular Tube Blade

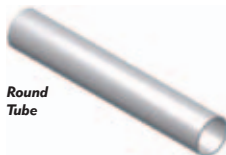


Flat Blade

FASCIA DESIGNS



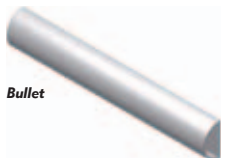
Wedge



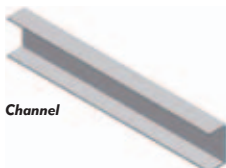
Round Tube



Rectangular Tube



Bullet



Channel

OUTRIGGER DESIGNS



Wedge



Rounded End



Flat Bar



Rounded End Tapered



Channel

Impact resistant hurricane louvers protect the building envelope from debris, wind and rain infiltration. They are designed for much higher windloads than standard louvers and are subjected to rigorous testing to verify their structural integrity. Each product has a tested and approved installation method to ensure its proper application.

- TAS-201: Large Missile Impact Test
- TAS-202: Uniform Static Air Pressure Test
- TAS-203: Cyclic Wind Pressure Load Test

All models are provided with factory birdscreen.

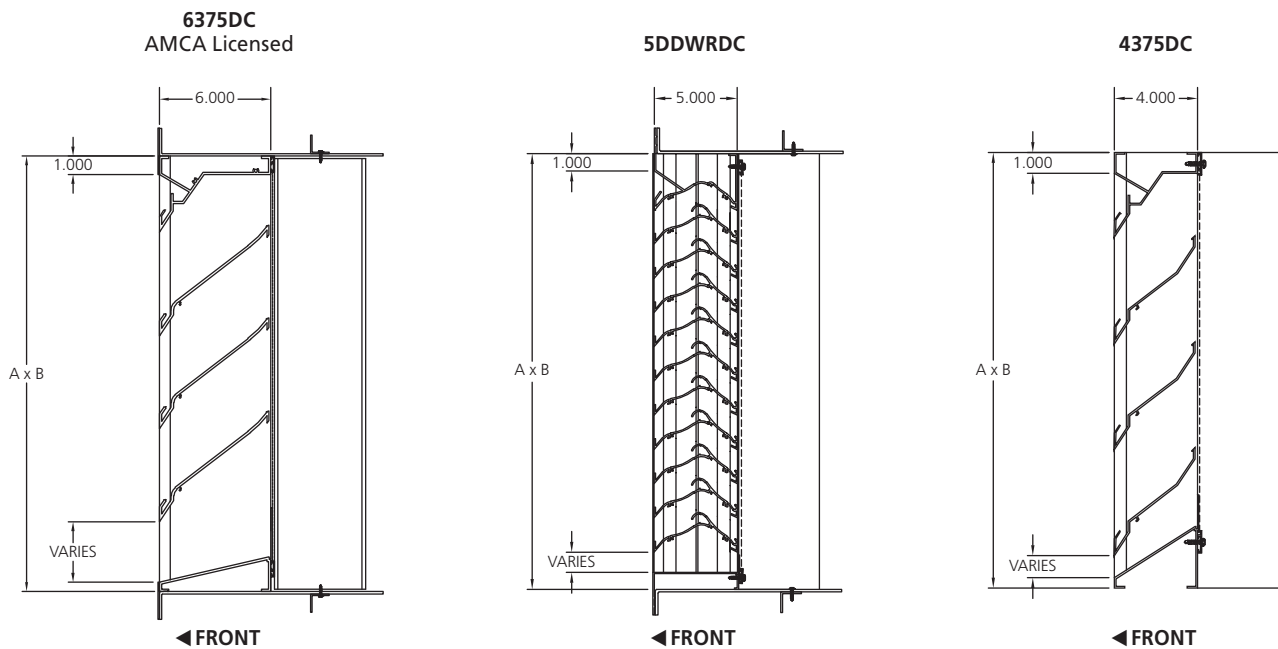


4375DC – Dade County Louver



Reliable Products certifies that the 6375DC louver shown herein is licensed to bear the AMCA Seal. The ratings shown are based on tests and procedures performed in accordance with AMCA Publication 511 and comply with the requirements of the AMCA Certified Ratings Program.

The AMCA Certified Ratings Seal applies to Air Performance and Water Penetration.



MODEL	DEPTH	DESCRIPTION	HURRICANE TESTS	INSTALLATION
Hurricane Louvers – Miami-Dade County				
4375DC Miami-Dade NOA 08-1204-04	4 (102)	Horizontal Drainable	TAS-201, 202 & 203 (±130 psf)	Universal Flange and Mechanical Fasteners
6375DC Miami-Dade NOA 08-1110-12	6 (152)	Horizontal Drainable	TAS-201, 202 & 203 (+148 psf)	Universal Flange
5DDWRDC Miami-Dade NOA 09-0713-04	5 (127)	Horizontal Wind-Driven Rain	TAS-201, 202 & 203 (+140 psf)	Universal Flange

The 4375DFL and 6375DFL Stationary Louvers with drainable blade are louvers designed to withstand high windloads. The louver and its installation method are UL listed for 50 psf windload resistance and Florida Product Approved for compliance to the Florida Building Code.



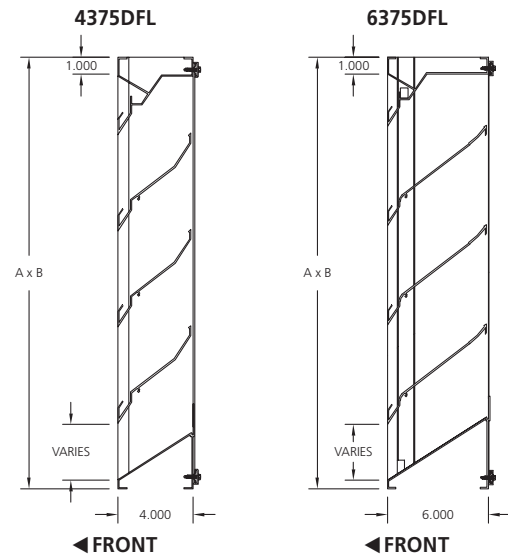
UL File: R22052
Windstorm-Rated Assemblies

Specifications

Furnish and install louvers as hereinafter specified where shown on plans or as described in schedules. Louvers shall be UL Classified for wind resistant building components in accordance with ASTM E330-02 for ± 50 psf windload. Louvers shall be stationary drainable type with drain gutters in each blade and downspouts in jambs and mullions. Louvers shall have a minimum of 57% free area based on a 48" wide x 48" high (1219 x 1219) size. Stationary drainable blades shall be contained within a 6" (152) frame. Louver components (heads, jambs, sills, blades, and mullions) shall be factory assembled by the louver manufacturer. Louver sizes too large for shipping shall be built up by the contractor from factory assembled louver sections to provide overall sizes required. Louver design shall limit span between visible mullion to 10 feet (3) and shall incorporate structural supports required to withstand a wind load of 50 lbs. per sq. ft. (.96kPa).



4375DFL – Florida Louver



SPECIFICATIONS								PERFORMANCE 48" X 48" UNIT				
Louver Model	Blade Material (Nom.)	Blade Style	Blade Angle	Blade Centers (Nom.)	Frame Material (Nom.)	Frame Depth	Bird Screen	Free Area (Nom.)	Sq. Ft. Free AREA	Max. Rec. Air Flow Thru Free Area FPM	Air Flow CFM	Maximum Pressure Drop, Inches w.g.
4375DFL Florida Approval FL12900	6063-T5 .081" (2.0) ext. alum.	Drainable	37.5°	5-3/32" (129) ext. alum.	6063-T5 .081" (2.0)	4" (152) alum.	5/8" x .040" (16 x 1)	49%	7.76 (.72m ²)	1055 (322m/ min)	8186 (1263 m ³ /min)	.22 (.04 kPa)
6375DFL Florida Approval FL11614	6063-T5 .081" (2.0) ext. alum.	Drainable	37.5°	5-29/32" (150) ext. alum.	6063-T5 .081" (2.0)	6" (152) alum.	5/8" x .040" (16 x 1)	57%	9.08 (.84m ²)	1023 (312m/ min)	9289 (1263 m ³ /min)	.14 (.04 kPa)

Dimensions in parentheses () indicate millimeters.

Weather Resistant Louvers

The wind driven rain louvers provide extra wind driven rain protection in storm settings. The blade profiles are equipped to stop excessive water and drain properly. Free area percentages are acceptable in most cases. These louvers are available in any finish as well as standard bird or insect screens are included. The **5DDWR** is a 5 inch deep, 99% weather resistant louver with double drains. The **745WR** is 7" deep providing exceptional water protection as well. The **6RRSV** is a 6" vertical high performance louver.

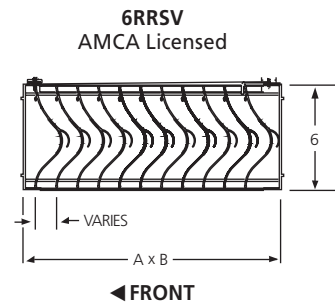
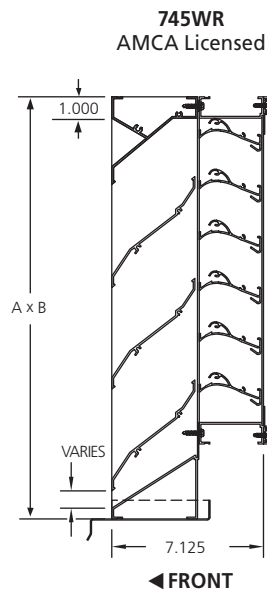
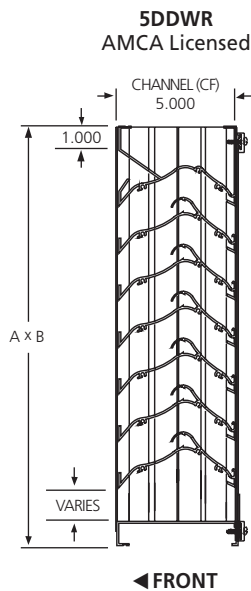


5DDWR, 745WR, 6RRSV



Reliable Products certifies that the 5DDWR, 745WR and 6RRSV louvers shown herein are licensed to bear the AMCA Seal. The ratings shown are based on tests and procedures performed in accordance with AMCA Publication 511 and comply with the requirements of the AMCA Certified Ratings Program.

The AMCA Certified Ratings Seal applies to Air Performance and Wind Driven Rain ratings for the 745WR and 6RRSV louvers. The AMCA Certified Ratings Seal applies to Air Performance, Water Penetration and Wind Driven Rain ratings for the 5DDWR louver.



MODEL	FREE AREA	RAIN CLASS %	BLADE MATERIAL	PRESSURE DROP INCHES W.G. (kpa)	BLADE SPACING	WIND VELOCITY (MPH)	FREE AREA VELOCITY fpm (m/min)
Weather Resistant Louvers							
5DDWR	47%	A/99.7	.081 Extruded Aluminum	.17 (.04)	2.000"	29 (46.4 kph)	1327 (347)
745WR	49%	B/96.2	.081 Extruded Aluminum	.18 (.04)	2.750"	29 (46.4 kph)	874 (264)
6RRSV	42%	A/100	.125 Extruded Aluminum	.19 (.04)	1.500" Vertical	29 (46.4 kph)	2149 (450)

Adjustable Louvers & Combination Louver/Dampers

The adjustable louver provides operable blades, with various blade profiles being optional. The open/close function of the blade is available with either manual or electric actuator options. The louver/damper combo provides a louver blade profile with the open/close functions of the damper being adjustable with manual or actuator options. All models are equipped with standard insect or bird screens. All finishes and a variety of actuators are available. All combination louvers are provided with a blade and jamb seal for tight closure. The **6375DHAX** is a 6" combination louver/damper that features an airfoil operable blade that allows larger operating sections. The **445RBED** is a 4", 45 degree backdraft damper/louver combination; with the **445RDHBD** providing a 45 degree drainable/ louver damper combination.



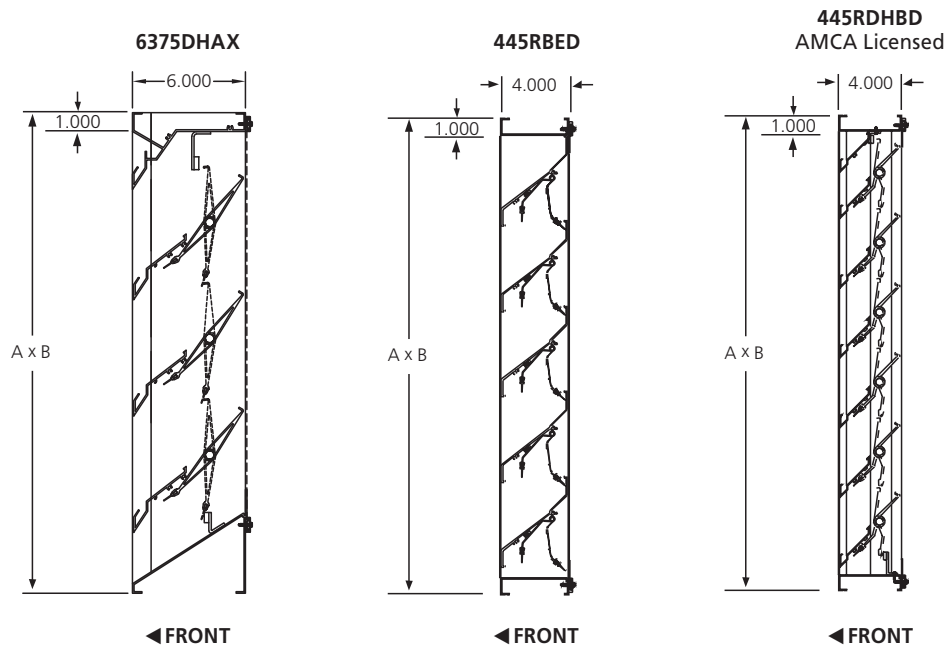
445RDABL, 445RBED, 6375DHAX



Reliable Products certifies that the 445RDHBD louver shown herein is licensed to bear the AMCA Seal. The ratings shown are based on tests and procedures performed in accordance with AMCA Publication 511 and comply with the requirements of the AMCA Certified Ratings Program.

The AMCA Certified Ratings Seal applies to Water Penetration and Air Performance Ratings only.

The 6375DHAX and 445RBED louvers are not licensed to bear the AMCA Seal.



MODEL	FREE AREA	MAX. REC. AIR FLOW THRU FREE AREA FPM	BLADE MATERIAL	PRESSURE DROP INCHES W.G. (kpa)	BLADE ANGLE
Adjustable Louvers And Combination Louver/Dampers					
6375DHAX	47%	1169 (356)	.125 Extruded Aluminum	.16 (.03)	37.5° Adjustable
445RBED	40%	2500 (762)	.050 Extruded Aluminum	1.0 (.25)	45° Backdraft Damper-Louver Combo.
445RDHBD	39%	974 (297)	.081 Extruded Aluminum	.07 (.02)	45° Damper/Louver Combo.

Standard Colors

BAKED ENAMEL FINISH – 50% KYNAR



LB – Lite Bronze



MB – Medium Bronze



DB – Dark Bronze



EW – Off White



GW – Gloss White



WS – White Stone



BR1 – Brick Red 1



BR3 – Brick Red 3



BR5 – Brick 5



SLG – Slate Grey



MBL – Medium Blue



MGN – Medium Green

KYNAR PAINTED FINISH



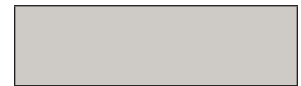
K Bone White



K Surrey Beige



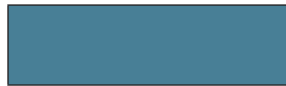
K Taupestone



K Sandstone



K Brick Red



K Slate Blue



K Colonial Red



K Royal Blue



K Patina Green



K Seal Brown



K Dark Brown



K Evergreen

CUSTOM COLORS AVAILABLE

We can match your color. Color chip or sample should be sent to our Architectural Sales Department. A Sample chip will be returned to you for your approval. Please contact our Sales Team if you have any questions.

**Colors may vary slightly with paint lots.*

