

15045RZ

Thin Line Stationary Louver

Extruded Aluminum

RELIABLE

APPLICATION

The 15045RZ is a 1 1/2" deep extruded aluminum, mechanically fastened, thinline, stationary louver. It's designed for exterior and interior locations featuring architecturally styled hidden mullions which allows for a continuous line appearance. This louver is designed to protect air intake and exhaust openings on exterior walls.

STANDARD CONSTRUCTION

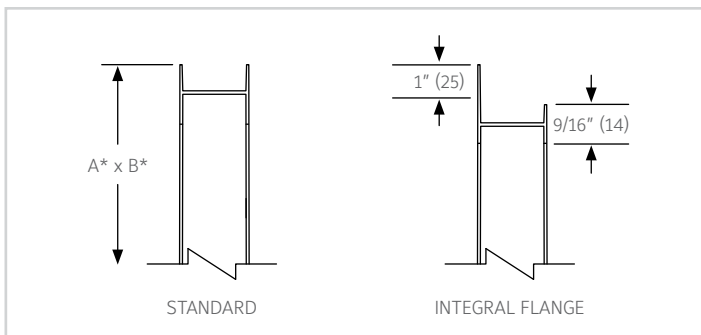
Frame	1 1/2" (38) deep, 6063T6 extruded aluminum with .062" (1.6) nominal wall thickness. Caulking surfaces provided.
Blades	6063T6 extruded aluminum with .060" (1.6) nominal wall thickness. Blades are positioned at 45° angle and spaced approximately 1 7/8" (48) center to center.
Screen	5/8" x .040" (16 x 1) expanded, flattened aluminum bird screen in removable frame. Screen adds approximately 1/2" (13) to louver depth.
Finish	Mill.
Minimum Size	6"w x 6"h (152 x 152).
Approximate Shipping Weight	2.5 lb. per sq. ft. (12.2 kg/m²).
Maximum Factory Assembly Size	Shall be 60 sq. ft. (5.6m²) per section, not to exceed 120"w x 72"h (3048 x 1829) or 72"w x 120"h (1829 x 3048). Louvers larger than the maximum factory assembly size will require field assembly of smaller sections.
Supports	Louvers may be provided with rear mounted blade supports that increase overall louver depth depending on louver size, assembly configuration or windload.

Consult Reliable for other special requirements.

FEATURES

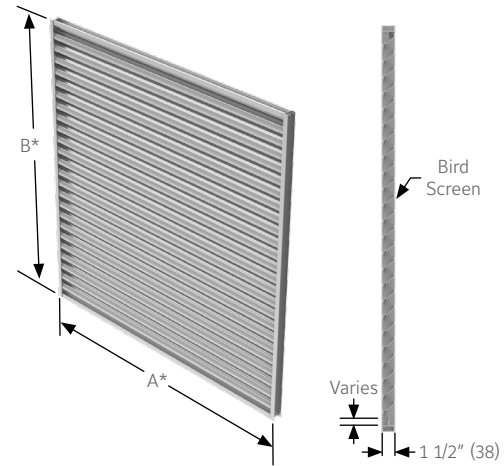
- 50% Free Area
- Mechanically fastened
- Windload 20 psf
- Aluminum construction for low maintenance and high resistance to corrosion

FRAME CONSTRUCTION



Note:

- Dimensions in inches, parenthesis () indicate millimeters.
- Units can be furnished actual size or with size deducts.



VARIATIONS

Variations to the basic design of this louver are available at additional cost. They include:

- Extended sill
- Hinged frame
- Drip cap
- Glazing frames
- Front or rear security bars
- Filter racks
- Installation angles
- Universal sleeve
- Blank off panels
- A variety of bird and insect screens
- Optional finishes available at additional cost: Prime coat, 50% PVDF (modified fluoropolymer), Epoxy, Pearledize, 70% PVDF, Clear and Anodized finishes. (Some variation in anodize color consistency is possible)

Consult Reliable for other special requirements.

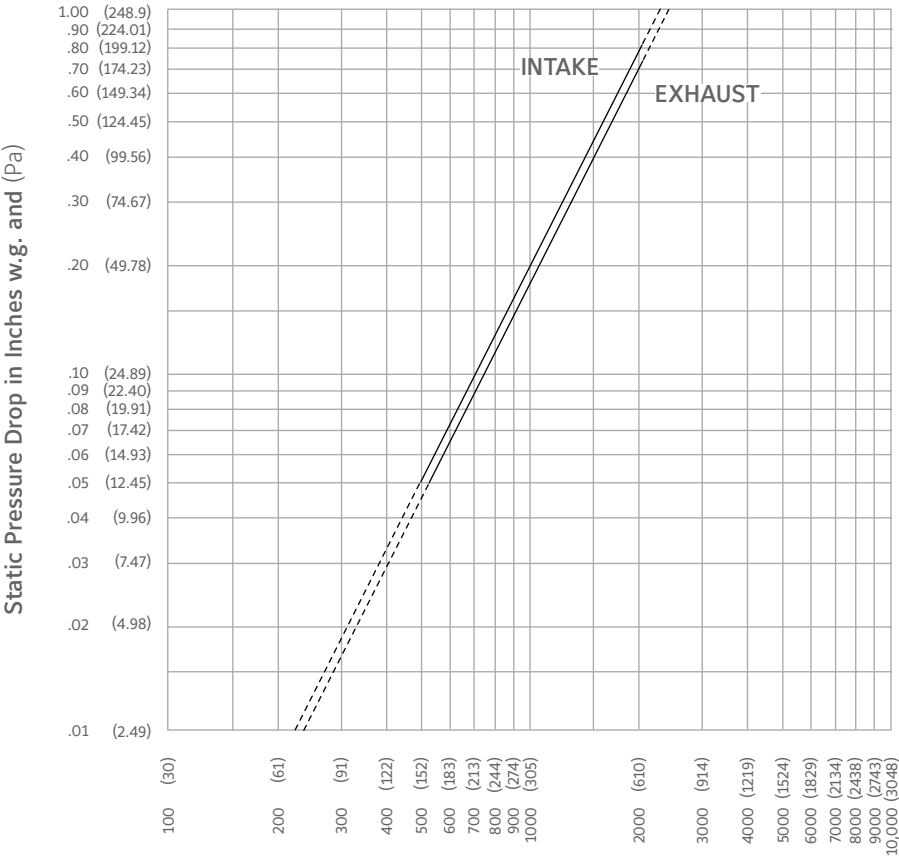
FREE AREA GUIDE

Free Area Guide shows free area in ft² and m² for various sizes of 15045RZ.

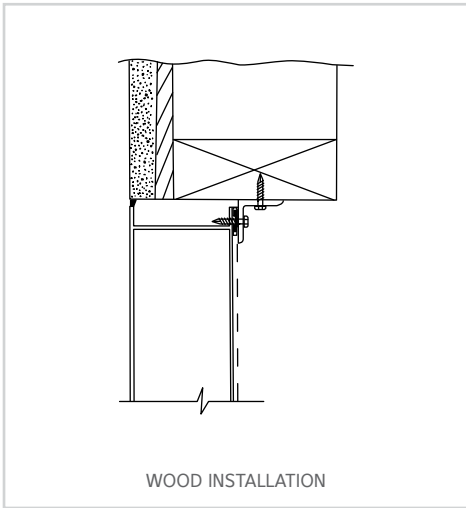
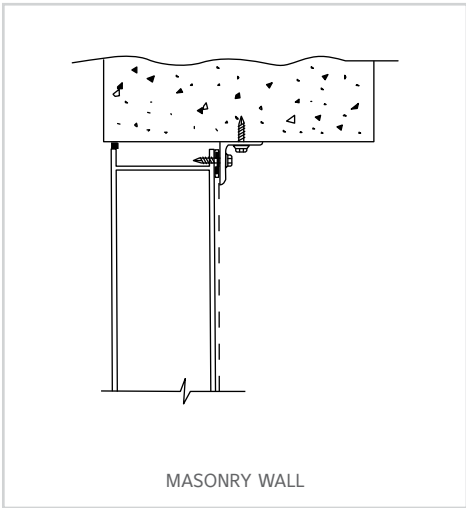
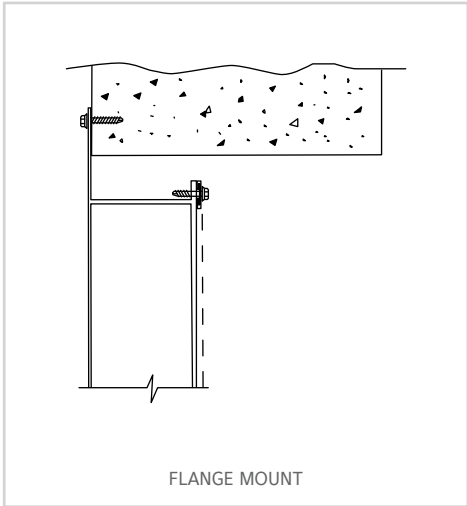
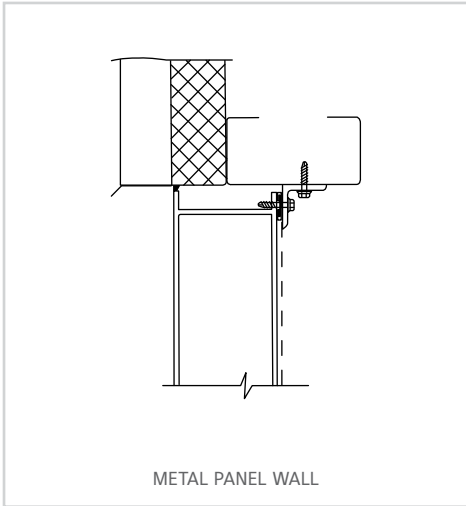
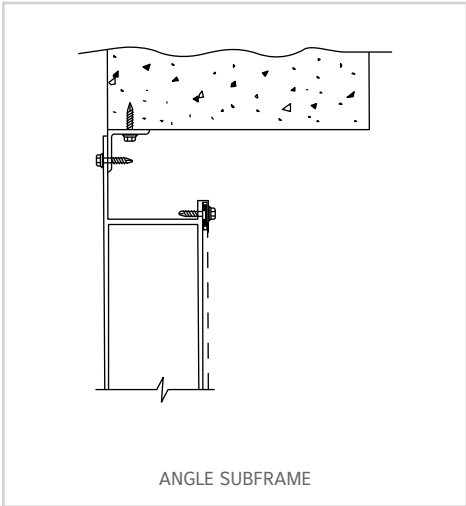
		Width – Inches and Meters									
Height – Inches and Meters		12	18	24	30	36	42	48	54	60	
		0.30	0.46	0.61	0.76	0.91	1.07	1.22	1.37	1.52	
	12	0.30	0.37	0.58	0.79	1.01	1.22	1.43	1.64	1.85	2.06
		0.03	0.05	0.07	0.09	0.11	0.13	0.15	0.17	0.19	
	18	0.46	0.62	0.98	1.33	1.69	2.04	2.39	2.75	3.10	3.46
		0.06	0.09	0.12	0.16	0.19	0.22	0.26	0.29	0.32	
	24	0.61	0.87	1.37	1.87	2.37	2.86	3.36	3.86	4.36	4.85
		0.08	0.13	0.17	0.22	0.27	0.31	0.36	0.41	0.45	
	30	0.76	1.06	1.66	2.27	2.88	3.48	4.09	4.69	5.30	5.90
		0.10	0.15	0.21	0.27	0.32	0.38	0.44	0.49	0.55	
	36	0.91	1.31	2.06	2.81	3.56	4.30	5.05	5.80	6.55	7.30
		0.12	0.19	0.26	0.33	0.40	0.47	0.54	0.61	0.68	
	42	1.07	1.56	2.45	3.34	4.24	5.13	6.02	6.91	7.80	8.69
		0.06	0.10	0.13	0.17	0.20	0.24	0.27	0.31	0.34	
	48	1.22	1.81	2.85	3.88	4.92	5.95	6.98	8.02	9.05	10.09
		0.17	0.26	0.36	0.46	0.55	0.65	0.75	0.84	0.94	
	54	1.37	2.06	3.24	4.42	5.60	6.77	7.95	9.13	10.31	11.48
		0.19	0.30	0.41	0.52	0.63	0.74	0.85	0.96	1.07	
	60	1.52	2.25	3.53	4.82	6.11	7.39	8.68	9.96	11.25	12.53
		0.21	0.33	0.45	0.57	0.69	0.81	0.93	1.05	1.17	

Free area velocity at point of .01 oz./ft.² (3g/m²) of free area
water penetration: 390 fpm (119 m/min).

PRESSURE DROP



TYPICAL INSTALLATION DETAILS



SUGGESTED SPECIFICATION

Furnish and install louvers as hereinafter specified where shown on plans or as described in schedules. Louvers shall be stationary type. Louvers shall have a minimum of 50% free area based on a 48" wide x 48" high (1219 x 1219) size. Stationary blades shall be contained within a 1 1/2" (38) frame. Louver components (heads, jambs, sills, blades & mullions) shall be factory assembled by the louver manufacturer. Louver sizes too large for shipping shall be built up by the contractor from factory assembled louver sections to provide overall sizes required. Louver design shall incorporate structural supports required to withstand a wind load of 30 lbs. per sq. ft. (1.4kPa) (specifier may substitute any loading required).

Louvers shall be Reliable Model 15045RZ extruded 6063T6 aluminum alloy construction as follows:

Frame: 1 1/2" (38) deep .062" (1.6) wall thickness.

Blades: .060" (1.6) nominal wall thickness. Blades are positioned at 45° angle and spaced at approximately 1 7/8" (48) center to center.

Screen: 5/8" x .040" (16 x 1) expanded, flattened aluminum in removable frame.

Finish: Select finish specification from Reliable Finishes Brochure.

Published louver performance data derived from testing in accordance with AMCA 500-L for Air Performance must be submitted for approval prior to fabrication and must demonstrate pressure drop equal to or less than the Reliable model specified.

LINKS TO IMPORTANT DOCUMENTS

Document Title
Finishes and Color Guide
Limited Warranty Document

RELIABLE

1300 Enterprise Road, P.O. Box
580, Geneva, Alabama 36340
Tel: 334-684-3621
Tel: 800-624-3914
Fax: 800-508-1469