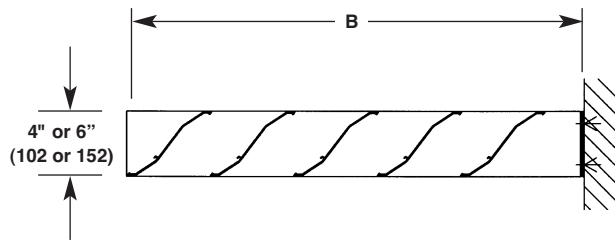
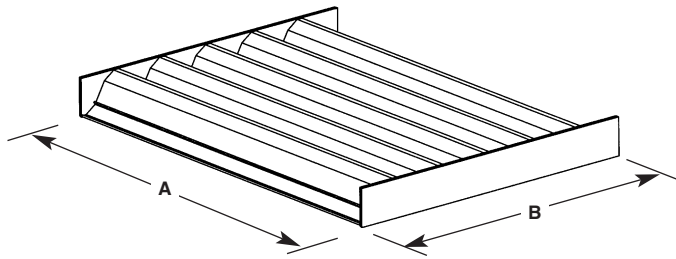




1300 ENTERPRISE ROAD GENEVA, ALABAMA 36340-0580 800-239-4621 FAX 1-800-508-1469 www.reliablelouvers.com

4LBSS/6LBSS LOUVER BLADE SUNSHADE HORIZONTALLY MOUNTED



Dimensions in parenthesis () indicate millimeters.

STANDARD CONSTRUCTION

BLADES

4" (102) or 6" (152) wide louver blade, 6063T5 extruded aluminum, .081" (2.1) nominal thickness, approximately 5³/₃₂" (129) center-to-center spacing, installed at 37¹/₂° angle.

OUTRIGGERS

4" wide x .375" thick (102 x 10) flat, non-tapered aluminum bar. Other outrigger designs are available at additional cost.

FASCIA

Available at additional cost.

INSTALLATION

Installation brackets and hardware by others.

CONSTRUCTION

All welded.

FINISH

Mill.

MINIMUM SIZE

12"w x 12"h (305 x 305).

APPROXIMATE SHIPPING WEIGHT

5 lbs. per sq. ft. (24 kg/m²).

MAXIMUM SINGLE SECTION SIZE

Consult factory.

OVERALL

Single sections may be joined together in the field for unlimited overall size. Field assembly and supporting structure are by others.

VARIATIONS

- Alternate blade spacing.
- Alternate blade installation angles.
- Outrigger Options: tapered bar, channel and tube.
- Fascia Options: channel, round and bullnose shapes.
- Installation brackets and hardware are available.
- Selection of finishes: baked enamel (modified fluoropolymer), Kynar, Pearledize 50 & 70, prime coat, clear and color anodize. (Some variation in anodize color consistency is possible.)

All variations are available at additional cost. Consult Reliable for other special requirements.

TAG	QTY.	ACTUAL SIZE		VARIATIONS
		A - WIDE	B - HIGH	
PROJECT		LOCATION		
ARCH./ENGR.		CONTRACTOR		
REPRESENTATIVE		DATE		