

TUBES SUPPORTS

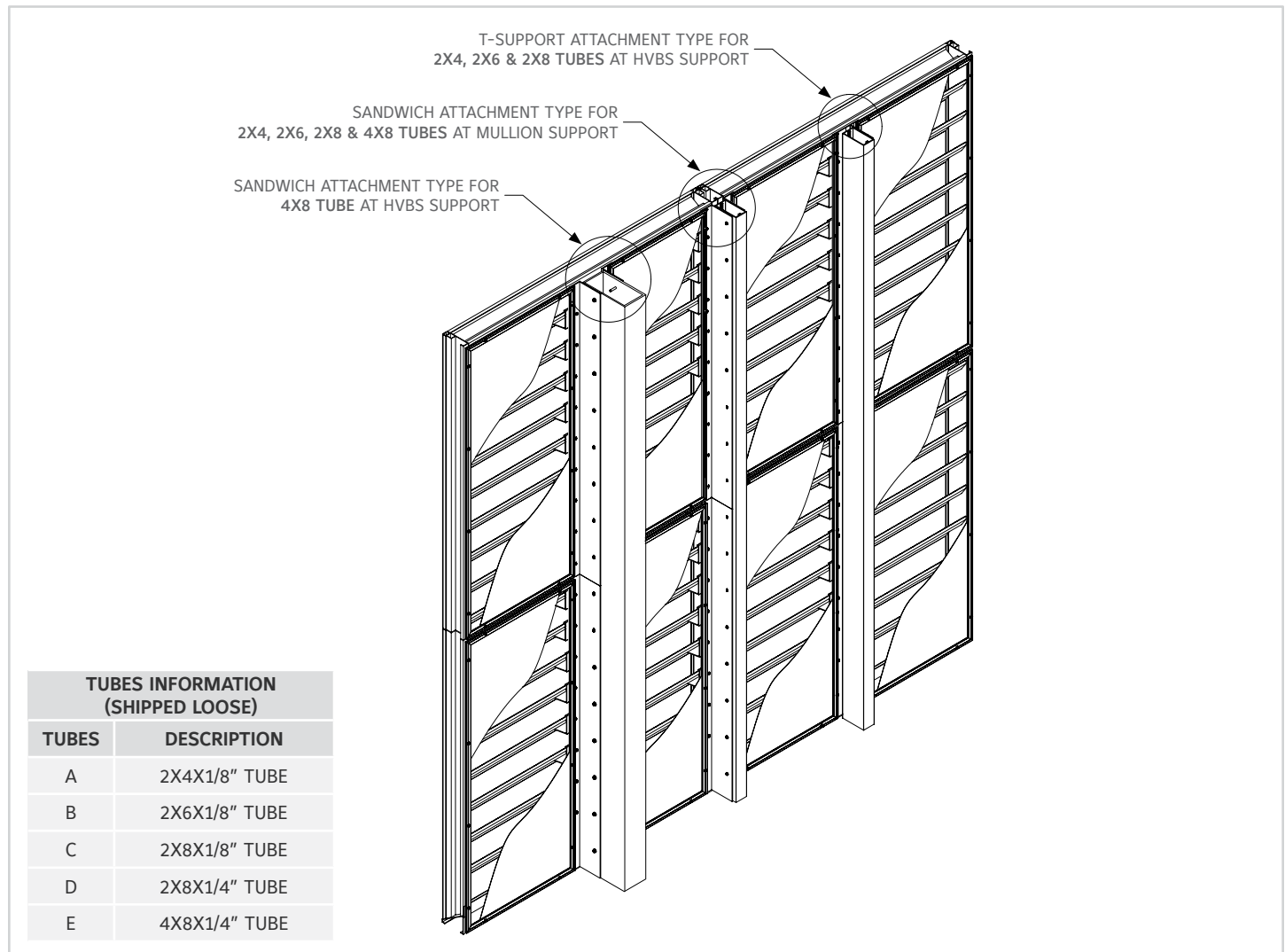
Installation Guide



ASSEMBLY PROCEDURE:

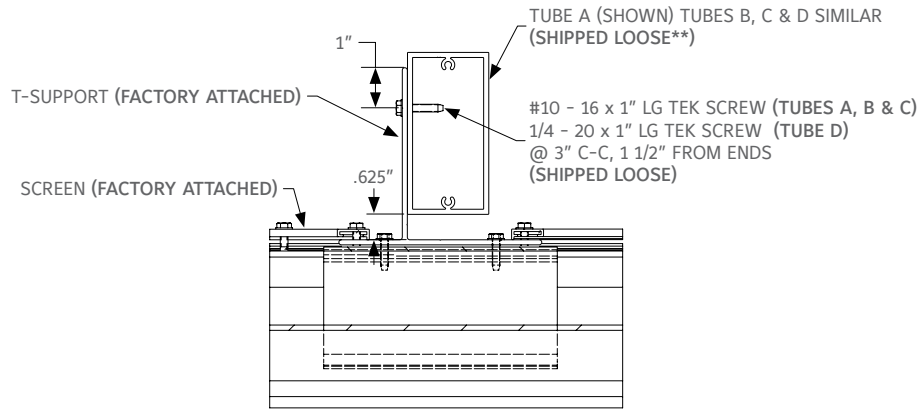
1. Make sure you have recieved ship loose kit with tubes & hardware. (if applicable).
2. Refer to tubes installation guide for clear installation procedures before starting it.
3. Mechanically fasten the tubes with t-support & make sure tube is levelled at certain height with the help of a wooden piece or some shims.

REFERENCE IMAGES

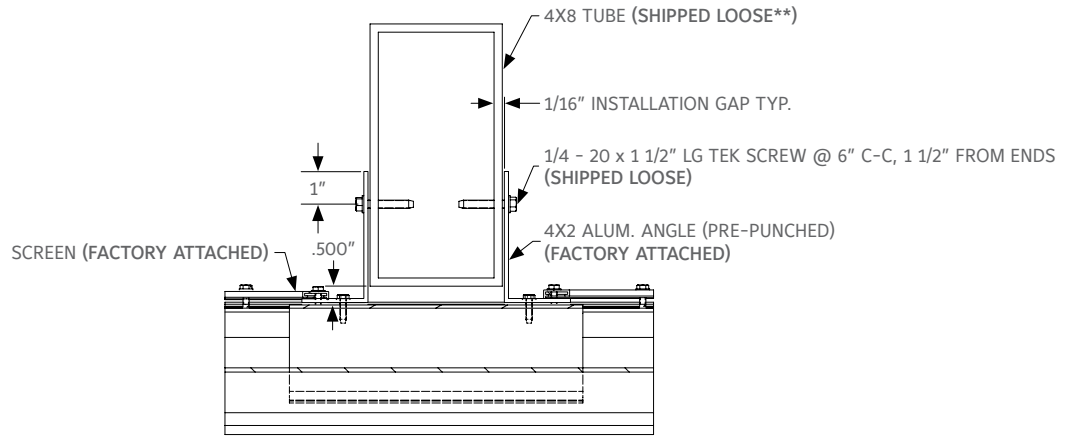


| TUBES | FASTENER INFO & PART # | SPACING INFO (HVBS) | SPACING INFO (MULLION) |
|----------------|--|-------------------------------|-------------------------------|
| TUBES A, B & C | #10 - 16 x 1" LG TEK SCREW (# 380430941) | 1 1/2" TYP. FROM ENDS, 3" C-C | 1 1/2" TYP. FROM ENDS, 6" C-C |
| TUBE D | 1/4 - 20 x 1" LG TEK SCREW (# 380431260) | 1 1/2" TYP. FROM ENDS, 3" C-C | 1 1/2" TYP. FROM ENDS, 6" C-C |
| TUBE E | 1/4 - 20 x 1 1/2" LG TEK SCREW (# 380430830) | 1 1/2" TYP. FROM ENDS, 6" C-C | 1 1/2" TYP. FROM ENDS, 6" C-C |

REFERENCE IMAGES



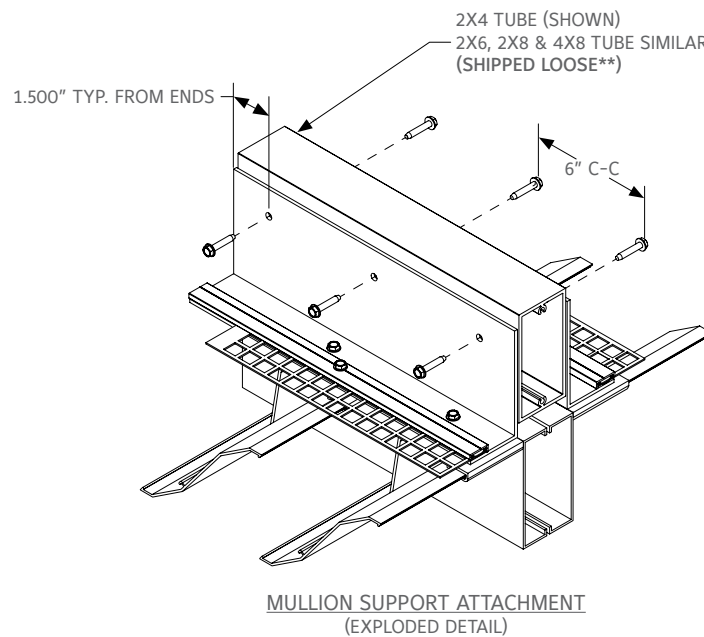
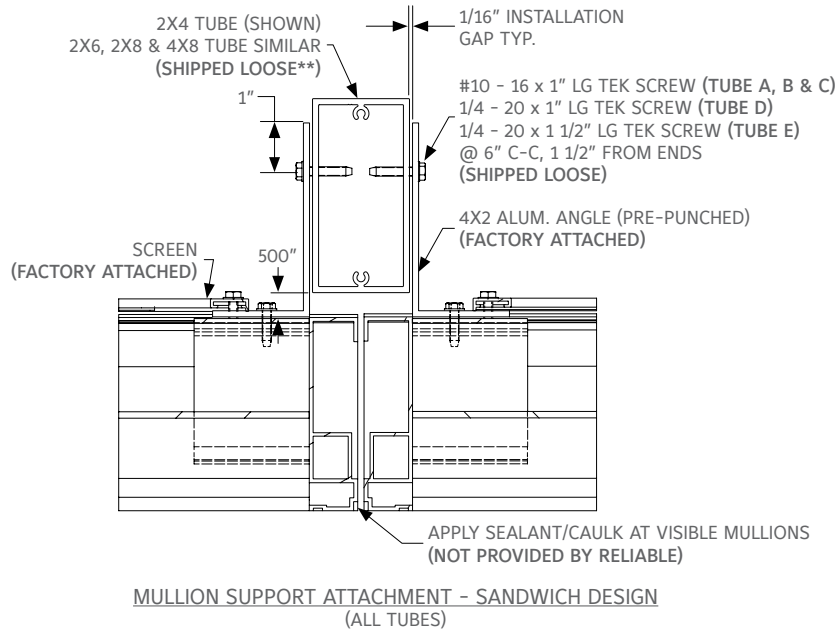
HVBS SUPPORT ATTACHMENT
(2X4, 2X6 & 2X8 TUBES)



HVBS SUPPORT ATTACHMENT - SANDWICH DESIGN
(4X8 TUBE)

Shipped loose**
Depends upon louver size and or applied windload.
(Refer job specific drawings if requested)

REFERENCE IMAGES



Shipped loose**
Depends upon louver size and or applied windload.
(Refer job specific drawings if requested)

RELIABLE

1300 Enterprise Road, P.O. Box
580, Geneva, Alabama 36340
Tel: 334-684-3621
Tel: 800-624-3914
Fax: 800-508-1469
Website: www.reliablelouvers.com